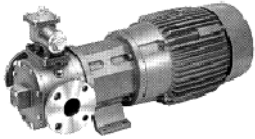


Fluid Processing and Transfer Pumps (Rotary Vane)

A

- Positive Displacement Rotary-Vane Pumps for demanding applications.
- Dry run capability for priming and line stripping
- Proven reliability with VOC's, liquefied gases, abrasive and viscous fluids
- Sliding-vane design self-compensates for wear to provide sustained, high level performance.
- High volumetric and mechanical efficiency to energy savings
- Easy and economical to maintain
- ISO 9001 Certified

Magnetically-Coupled Pumps



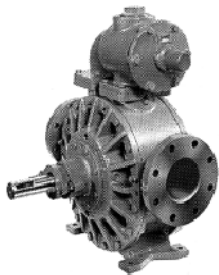
MVP and stainless steel SMVP pumps combine a sealless magnetic coupling with Blackmer's sliding-vane design. So they're ideal for applications that require zero shaft leakage-like EPA-monitored liquids, VOC's and other hazardous materials

Stainless Steel Pumps

Corrosion-resistant 316 stainless steel construction makes these pumps ideal for handling liquid foods, caustics, and other corrosive fluids. Non-metallic contact parts eliminate galling. Choice of mechanical seal or shaft packing, along with jacketed heads.

| port sizes | capacities | pressure | temperature |
|-------------|----------------------------|---------------------------|---------------------|
| 1 1/2" - 4" | 5-300 gpm (19-1135 lpm) | to 150 psid (1034 kPa) | to 440° (225° C) |

| port sizes | capacities | pressure | temperature |
|-------------|----------------------------|---------------------------|---------------------|
| 1 1/2" - 3" | 5-265 gpm (19-1003 lpm) | to 150 psid (1034 kPa) | to 400° (204° C) |



Heavy-Duty Process Pumps

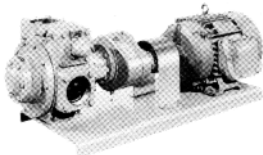
A full range of models can handle fluids ranging from thin non-lubricating solvents to highly viscous liquids. Available in ductile iron or cast steel construction, with ball or roller bearing iron or cast steel construction, with ball or roller bearing and mechanical seals.

Abrasive Liquid Pumps

Wear-resistant construction withstands the tough service of abrasive liquids. Replaceable wear surfaces are specially hardened to extend service life. External bearing with mechanical seals or shaft packing.

| port sizes | capacities | pressure | temperature |
|-------------|----------------------------|---------------------------|---------------------|
| 1 1/2" - 4" | 5-300 gpm (19-1135 lpm) | to 150 psid (1034 kPa) | to 440° (225° C) |

| port sizes | capacities | pressure | temperature |
|-------------|----------------------------|---------------------------|---------------------|
| 1 1/4" - 4" | 5-280 gpm (19-1060 lpm) | to 150 psid (1034 kPa) | to 400° (204° C) |



Liquefied and Compressed Gas Equipment

Pumps and compressors specially designed for transfer of propane, butane, CO2 and a variety of industrial gases. Flowrates to 300 US gpm (1100 lpm) For more information, request Bulletin 501 for Liquefied Gases and Bulletin 701 for CO2 service

Hand Pumps

Blackmer hand-operated pumps have heavy-duty construction to meet a wide range of transfer and dispensing applications.

INDUSTRIAL/PETROLEUM PUMPS

