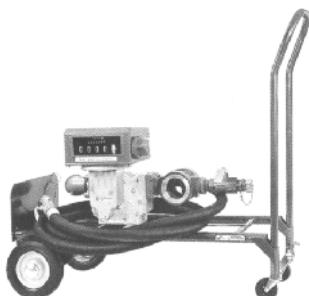


MA-4

- Capacity: 30 GPM (115 L/min.)
- Choice of 1 1/2" standard and 2" optional companion flanges.

MA-5

- Capacity: 60 GPM (225 L/min.)
- Choice of 1 1/2" standard and 2" optional companion flanges.



LPG Meter Proving Cart

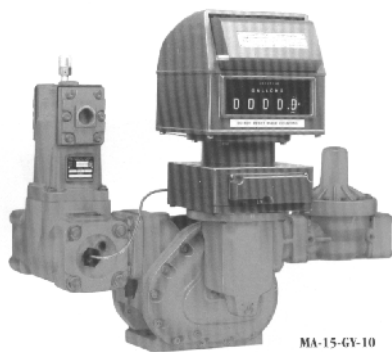
LC's custom - built portable meter cart provides for a quick/easy method to check the accuracy of your LP Gas meter flow range of 5 to 200 GPM.

- No down times - simply connect the reference meter in-line during normal operation or by recirculating back into the supply tank.
- Portable- Can be handle and operated by one person and easily transported from one location to another.
- Accuracy - Reference meter is calibrated and sealed conforming to NIST Standards. Can be used to check ant LPG meter regardless of manufacturer.



MA-7

- Capacity: 100 GPM (380 L/min.)
- Class 12 construction for NH₃ (Anhydrous Ammonia) service available
- Choice of 2" standard and 1 1/2" optional companion flanges.



MA-15

- Capacity: 160 GPM (605 L/min.) Up to 200 GPM (760 L/min.) with optional 3" differential valve
- Standard 3" inlet 2" outlet with choice of NPT, BSPT or steel welding flange (3" outlet optional).

