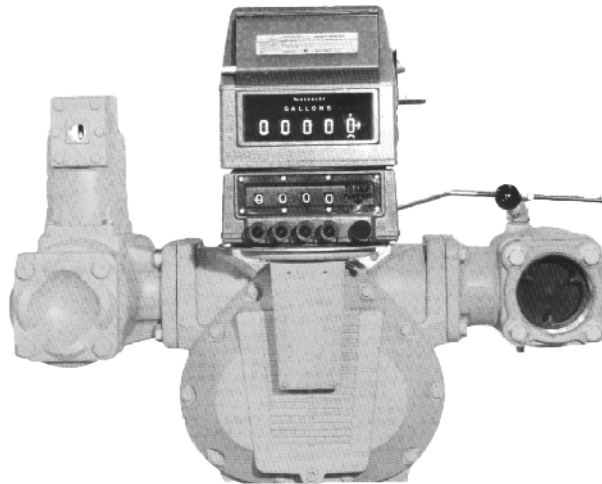


Positive Displacement Meters

METERS



METER MODELS									
Listed in order of Maximum Nominal Flow Rates. Consult IC Publication #195 for product application and material class recommendations.									
Maximum Non-Shock Working Pressure (PSI) ratings are based on metering products at temperatures below 160°F (71°C).									
Maximum Nominal Flow Rate	Standard Flange Size*	Primary Material	Material Classes	150 PSI 10.5 BAR 1034 kPa	275 PSI 19 BAR 1896 kPa	300 PSI 21 BAR 2068 kPa	350 PSI 25 BAR 2413 kPa	720 PSI 50 BAR 4964 kPa	1,440 PSI 100 BAR 9927 kPa
30 GPM (113 L/min.)	1 1/2" NPT	Aluminum	10					MA-4+	
60 GPM (227 L/min.)	1 1/2" 2" Optional	Aluminum Stainless Steel	1,2,3,4,10,14,16 & 30 8	M-5 M-5	M-5**			MA-5+	
100 GPM (380 L/min.)	2" 1 1/2" Optional	Aluminum Stainless Steel Cast Iron Brass Steel	1,2,3,4,10,14,15 & 16 8 7,27 & 37 20 1,2,7,10,14,16 & 37	M-7 M-7 M-7 M-7 MS-7	M-7** M-7** M-7** MSAA-7			MA-7+	
150 GPM (550 L/min.)	2"	Aluminum	1 & 2	M-10	M-10**				
200 GPM (757 L/min.)	3" 3" 3"	Aluminum Steel Stainless Steel	1,2,3,4,10,14,15 & 16 1,2,10,14 & 16 8	M-15 MS-15	M-15** MSAA-15 MSAA-15	MSA-15		MA-15+	MSB-15 MSC-15
300 GPM (1,136 L/min.)	3" 4" 3" 3"	Aluminum Cast Iron Steel Stainless Steel	2 1,2,3,4,14,15 & 16 7,27,37 & 47 1,2,10,14 & 16 8	M-25 M-30 M-30 MS-30	M-25**				
450 GPM (1,700 L/min.)	4" 3"	Aluminum Steel	1 & 2 1 & 2	M-40 MS-40					
600 GPM (2,271 L/min.)	4" 6" Optional	Aluminum	1,2,3,14 & 15	M-60	M-60**				
700 GPM (2,650 L/min.)	4" 6"	Steel	1,2,10 & 14	MS-75	MSAA-75	MSA-75			MSB-75 MSC-75
800 GPM (3,000 L/min.)	6" 4" Optional	Aluminum	2	M-80	M-80**				
1,000 GPM (3,785 L/min.)	6" 6"	Steel Stainless Steel	1,2,10 & 14 8	MS-120	MSAA-120 MSAA-120	MSA-120			MSB-120 MSC-120

*FLANGES: All standard M Series Meters are supplied with choice of threaded NPT and BSPT companion flanges... or slip-on welding companion flanges. MA-Series Meters are supplied standard with threaded NPT companion flanges.

**275 PSI working pressure available for meter only.

All MS-Series steel case Meters are supplied standard with ANSI flanged connections. DIN Optional. Reducing flanges are available for all steel case Meters.

+ MA-Series Meters are all III. Listed for LPG.

