

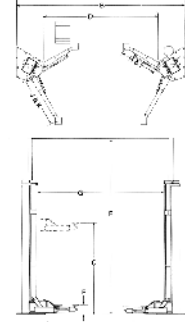
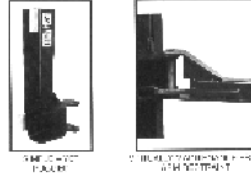
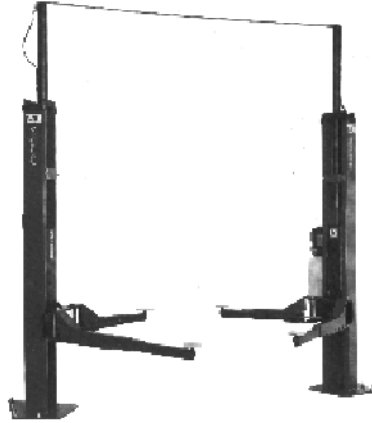
K

Hydraulic Lifts

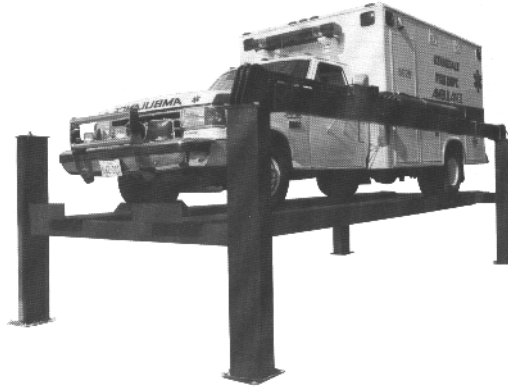
ML-7000 & ML-9000

Features:
Hydraulically synchronized
Clear floor
See through oil reservoir
Chrome plated cylinders

Single point air lock release
True asymmetric design
New design arm restraints
Ease of installation



SPECIFICATIONS	ML7000	ML9000
A. HOIST OVERALL	12	12
B. OVERHEAD AT 8455	11.52	11.52
C. HSE	3	3
D. DRIVE TIRE CLEARANCE	7.52	7.52
E. OVER-HEAD CLEARANCE	12	12
F. MIN. PICK UP AND HEIGHT	5	5
G. BETWEEN COLLARS	8.11"	8.11"
H. HEAD-TO-HEAD MINIMUM	2.12	2.12
I. HEAD-TO-HEAD MAXIMUM	2.25	2.25
J. REAR-TO-REAR MINIMUM	2.52	2.52
K. REAR-TO-REAR MAXIMUM	4.39	4.39
L. CAPACITY	7000 LB	9000 LB
M. ELECTRIC MOTOR	2 HP	2 HP
N. VOLTAGE (3 PHASE OPT)	208 200V	208 200V
O. CYCLE TIME	30 SEC	30 SEC
P. MIN. CEILING HEIGHT REQUIRED	12'	12'
Q. SHIPPING WEIGHT (LBS)	585	720



SPECIFICATIONS	MTR25	MTR30
Capacity (lbs.)	25,000	30,000
Overall length (D)	25' 1-5/8"	25' 1-5/8"
Overall length (B)	21' 7-5/8"	21' 7-5/8"
Overall width (A)	11' 9-3/4"	11' 9-3/4"
Distance between posts (F)	9' 11"	9' 11"
Width of runways (E)	24"	24"
Max. runway spread (G)	0-9"	0-9"
Max. wheel base	240"	240"
Height of lift	60"	60"
Rate of lift	130 sec.	130 sec.
Power unit 220V, 60Hz, 1ph	2 H.P.	2 H.P.
Shipping weight (lbs.)	5,000	6,000

