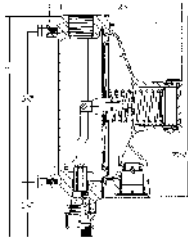


# LPG & AMMONIA EQUIPMENT



### LOW PRESSURE SECOND STAGE REGULATOR

#### Application

Designed to reduce first stage pressure of 5 to 20 PSIG down to burner pressure, normally 11" w.c. Ideal for larger commercial and industrial applications, multiple cylinder installations and large domestic systems.

#### Features:

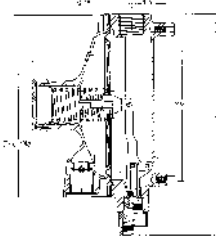
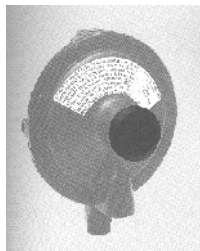
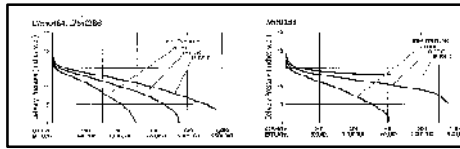
- Incorporates integral relief valves
- With 15 PSIG inlet pressure, regulator is designed to not pass more than 2 PSIG with the seat disc removed.
- Replaceable valve orifice and valve seat disc
- Straight line valve closure saves wear on seat disc and orifice
- Built in pressure tap has plugged 1/8" F.NPT outlet
- Large bonnet vent profile minimizes vent freeze over when properly installed
- Extra long lever arm for uniform delivery pressure
- Large diaphragm is extra sensitive to pressure changes
- Select brown finish

#### Ordering Information

Part Number	Inlet Connection	Outlet Connection	Outlet Size	Factory Delivery Pressure	Adjustment Range	Bonnet Vent Position	Approximate BTU/hr Capacity*
LV5503B	1/2" NPT	1/2" NPT	1/2"	11.0 PSIG	5.0 - 20.0	Up/Down	1,200,000
LV5503C	1/2" NPT	1/2" NPT	3/8"	11.0 PSIG	5.0 - 20.0	Up/Down	1,200,000

\*See chart on page 34 for BTU/hr capacity.

Material	Body	Diaphragm	Seal	Spring	Orifice	Seat Disc	Valve Stem	Adjustment Screw
Body	Cast Iron	Cast Iron	Cast Iron	Cast Iron	Cast Iron	Cast Iron	Cast Iron	Cast Iron
Diaphragm	Cast Iron	Cast Iron	Cast Iron	Cast Iron	Cast Iron	Cast Iron	Cast Iron	Cast Iron
Seal	Cast Iron	Cast Iron	Cast Iron	Cast Iron	Cast Iron	Cast Iron	Cast Iron	Cast Iron
Spring	Cast Iron	Cast Iron	Cast Iron	Cast Iron	Cast Iron	Cast Iron	Cast Iron	Cast Iron
Orifice	Cast Iron	Cast Iron	Cast Iron	Cast Iron	Cast Iron	Cast Iron	Cast Iron	Cast Iron
Seat Disc	Cast Iron	Cast Iron	Cast Iron	Cast Iron	Cast Iron	Cast Iron	Cast Iron	Cast Iron
Valve Stem	Cast Iron	Cast Iron	Cast Iron	Cast Iron	Cast Iron	Cast Iron	Cast Iron	Cast Iron
Adjustment Screw	Cast Iron	Cast Iron	Cast Iron	Cast Iron	Cast Iron	Cast Iron	Cast Iron	Cast Iron



### LOW PRESSURE SECOND STAGE TOBACCO BARN REGULATOR

#### Application

Especially developed for drying barns of tobacco industry. The LV5503G4 regulator will supply a steady and constant flow of fuel to as many as 12 to 20 burners throughout the barn.

#### Features:

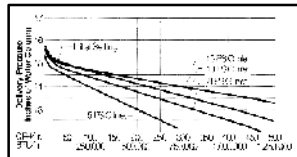
- Similar to construction of the LV5503B Series, providing the same stability, low lock-up and sensitive performance.
- Equipped with integral relief valve
- Distinctive yellow finish

#### Ordering Information

Part Number	Inlet Connection	Outlet Connection	Outlet Size	Factory Delivery Pressure	Adjustment Range	Bonnet Vent Position	Approximate BTU/hr Capacity*
LV5503G4	1/2" NPT	1/2" NPT	1/2"	11.0 PSIG	5.0 - 20.0	Adjustable	1,200,000

\*See chart on page 34 for BTU/hr capacity.

Material	Body	Diaphragm	Seal	Spring	Orifice	Seat Disc	Valve Stem	Adjustment Screw
Body	Cast Iron	Cast Iron	Cast Iron	Cast Iron	Cast Iron	Cast Iron	Cast Iron	Cast Iron
Diaphragm	Cast Iron	Cast Iron	Cast Iron	Cast Iron	Cast Iron	Cast Iron	Cast Iron	Cast Iron
Seal	Cast Iron	Cast Iron	Cast Iron	Cast Iron	Cast Iron	Cast Iron	Cast Iron	Cast Iron
Spring	Cast Iron	Cast Iron	Cast Iron	Cast Iron	Cast Iron	Cast Iron	Cast Iron	Cast Iron
Orifice	Cast Iron	Cast Iron	Cast Iron	Cast Iron	Cast Iron	Cast Iron	Cast Iron	Cast Iron
Seat Disc	Cast Iron	Cast Iron	Cast Iron	Cast Iron	Cast Iron	Cast Iron	Cast Iron	Cast Iron
Valve Stem	Cast Iron	Cast Iron	Cast Iron	Cast Iron	Cast Iron	Cast Iron	Cast Iron	Cast Iron
Adjustment Screw	Cast Iron	Cast Iron	Cast Iron	Cast Iron	Cast Iron	Cast Iron	Cast Iron	Cast Iron



### COMPACT TWIN STAGE REGULATOR

#### Application

This compact two-stage regulators is designed to reduce container pressure down to 11" w.c. delivery pressure. It is ideal for "on-site" cylinder applications, mobile homes and average domestic service including small ASME and 100 to 420 pound DOT cylinders

#### Features:

- Incorporates integral relief valves.
- With 15 PSIG inlet pressure, regulator is designed to not pass more than 2 PSIG with the seat disc removed.
- Large vent help prevent blockage and has 3/4" F.NPT for vent piping
- Compact size allows for easy installation - especially under container hoods and within collars
- Relief vent on the first stage is consistently in the down position.
- Select brown finish

#### Ordering Information

Part Number	Inlet Connection	Outlet Connection	Outlet Size	Factory Delivery Pressure	Adjustment Range	Bonnet Vent Position	Approximate BTU/hr Capacity*	Stage Vent Position
LV404B4	1/2" NPT	1/2" NPT	1/2"	11.0 PSIG	5.0 - 20.0	Up/Down	1,200,000	Up/Down
LV404B4V	1/2" NPT	1/2" NPT	1/2"	11.0 PSIG	5.0 - 20.0	Up/Down	1,200,000	Up/Down
LV404B8	1/2" NPT	1/2" NPT	3/8"	11.0 PSIG	5.0 - 20.0	Up/Down	1,200,000	Up/Down

\*See chart on page 34 for BTU/hr capacity.

Material	Body	Diaphragm	Seal	Spring	Orifice	Seat Disc	Valve Stem	Adjustment Screw
Body	Cast Iron	Cast Iron	Cast Iron	Cast Iron	Cast Iron	Cast Iron	Cast Iron	Cast Iron
Diaphragm	Cast Iron	Cast Iron	Cast Iron	Cast Iron	Cast Iron	Cast Iron	Cast Iron	Cast Iron
Seal	Cast Iron	Cast Iron	Cast Iron	Cast Iron	Cast Iron	Cast Iron	Cast Iron	Cast Iron
Spring	Cast Iron	Cast Iron	Cast Iron	Cast Iron	Cast Iron	Cast Iron	Cast Iron	Cast Iron
Orifice	Cast Iron	Cast Iron	Cast Iron	Cast Iron	Cast Iron	Cast Iron	Cast Iron	Cast Iron
Seat Disc	Cast Iron	Cast Iron	Cast Iron	Cast Iron	Cast Iron	Cast Iron	Cast Iron	Cast Iron
Valve Stem	Cast Iron	Cast Iron	Cast Iron	Cast Iron	Cast Iron	Cast Iron	Cast Iron	Cast Iron
Adjustment Screw	Cast Iron	Cast Iron	Cast Iron	Cast Iron	Cast Iron	Cast Iron	Cast Iron	Cast Iron