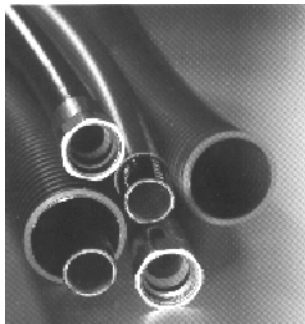




## Primary Pipes



### DIRECT-BURY JACKETED PRIMARY PIPE

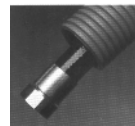
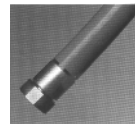
For primary fuel pipe is jacketed with a secondary containment cover for direct-bury applications.

### RETRACTABLE PRIMARY PIPE INSIDE CRUSH RESISTANT ACCESS PIPE

The crush resistant access pipe protects the primary pipe from backfill, provides an added layer of containment protection and allows primary pipe retractability for quick and easy inspections, repair or replacement without costly excavation.

### RETRACTABLE, JACKETED PRIMARY PIPE INSIDE CRUSH RESISTANT ACCESS PIPE

While maintaining all the benefits of the standard primary pipe / access pipe configuration, the jacketed primary pipe can be installed inside the unique double-wall corrugated access pipe to create the ultimate in containment protection.



## Flexible Piping

**Unique Double-Wall Corrugated Access Pipe**

- **Crush & Puncture Resistant** - flexible, and durable corrugated design protects primary piping against backfill; allows piping to give with ground movement and pump surges.
- **Saves You Time and Money** - complete retractable access to primary piping without excavation for quick, easy and affordable inspections, repairs or replacement.
- **Environmental Protection** - designed to provide a second or even third level of containment protection.

**Semi-Smooth Access Pipe Liner**

- **Facilitates Installation** - a semi-smooth inner covers the interior corrugated surface of the access pipe making insertion and/or retraction of primary piping quick and easy.
- **Improves Leak Detection Capabilities** - the smooth inner surface allows product to flow quickly to detectors / sensors in containment sumps.
- **Easy Liquid Recovery** - the smooth liner permits easy recovery of liquid collected in the containment system and prevents fluid or ice entrapment inside the access pipe.

**Nylon Outer Shell Layers**

- **Specialty Reinforced for Long-Term Performance** - braided fiber reinforcement for strength and pressure containment.
- **Dark Color** - preserves maximum flexibility in sunlight prior to installation.
- **Corrosion Resistant** - unique layered resistance to microbial attack and corrosive soil conditions.
- **Added Protection** - provides a secondary non-permeable barrier for a higher level of containment security.

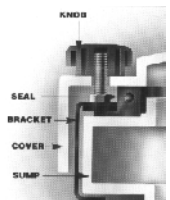
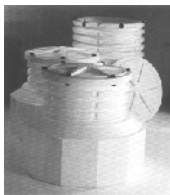
**Kynar™ Core Layer**

- **Unmatched Chemical And Permeation Resistance** - to provide reliable long term petroleum product transfer.
- **Efficient Flow Capabilities** - the smooth bore design, combined with fewer piping joints provides for maximum flow capabilities.

**Polyethylene Stand-Off Jacket**

- **Provides Secondary Product Containment and Leak Monitoring Capability** - interstitial space provides a natural liquid channel to allow for continuous leak detection of primary piping.
- **Versatile / Corrosion Resistant** - compatible with petroleum based products, and corrosive soil conditions. Not susceptible to microbial attack.

## Tank Sumps



### CONTAINMENT CHAMBER

- Long-term watertight performance / strength & rigidity - one piece polyethylene design provides reliable watertight integrity and long product life. Designed to resist deformation under burial and high water table forces.
- Light color - preserves rigidity in sunlight prior to backfilling and provides maximum visibility inside containment chamber after installation.
- Installation flexibility - multiple fast provide maximum pipe entry location.
- Corrosion resistant - made of long lasting, corrosion resistant polyethylene.
- Easy field-height adjustability - the special ribbed height adjustment design makes adjustments to finish grade, if necessary, quick and easy.

### SUMP COVER

- Liquid tight cover sealing system - this unique cover system uses no hoses inside of the cover seal to provide a true watertight environment. The end result: a clean dry sump area and no service calls for water intrusion.
- Undeniably effective, easy to use cover latching system - utilizing a specially designed locking ring, nitrile seal and thread-on knobs, the cover latching system creates a watertight compression seal between the cover and the sump without the use of a single wrench.
- Optional observation port available - to allow visual inspection without removing cover.

