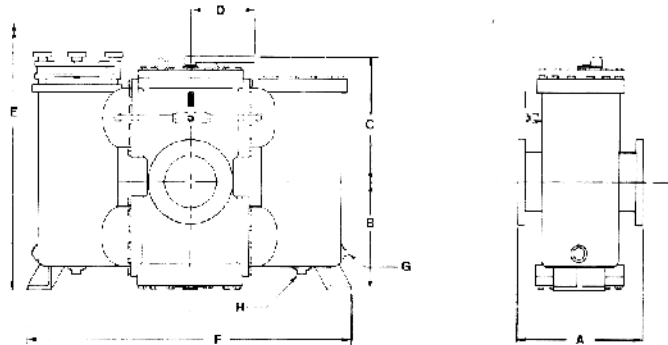


Duplex Strainer

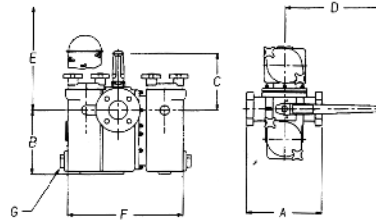
MODELS 691/ 6⁰²



NOMINAL SIZE	A	B	C	D	E screen removal	F	G NPT	WEIGHT lb./kg	
8"-16" DUPLEX STRAINERS									
8" 200	20	19	20-1/16	12	43	54-3/4	1	1365	620
10" 250	24	20-1/2	24-1/2	12	52	61	1	1970	895
12" 300	30	25-1/2	26-1/4	12	62	65-7/8	1	2800	1272
14" 350	32	27-7/8	25-5/8	12	67-5/8	71	1	3300	1300
16" 400	36-3/4	32	30-1/4	12	73-1/4	80-1/2	1-1/2	4400	2000

MODELS 791/792/794/796

Dimensions and weight are approximate. Various screen and mech material area available for all applications. Consult factory. 4", 5" and 6" units are standard with a gear operator. The hand wheel dimension is 10". 5" and 6" units utilize two baskets in each chamber. 6" bronze unit with 300 ANSI flanges is rated 300 PSI WOG. Temperatures limits dependent on O-ring material. Consult factory



NOMINAL SIZE	A	B	C	D	E screen removal	F	G	WEIGHT lb./kg		
SCREWED END										
3/4" 10	5-1/2	4-15/16	4-1/16	10	6-7/16	8-11/16	1/2	27	12.3	
1" 25	5-1/2	4-15/16	4-1/16	10	6-7/16	8-11/16	1/2	28	12.7	
1-1/4" 32	7-1/2	6-3/4	4-1/4	10	7-3/16	13-7/8	1-1/4	70	32	
1-1/2" 40	7-1/2	6-3/4	4-1/4	10	7-3/16	13-7/8	1-1/4	70	32	
2" 50	10	8-3/16	7-1/8	20	12-1/2	14-1/2	1-1/4	94	43	
2-1/2" 65	11-1/2	12	7-7/8	20	15-3/4	18-3/8	1-1/2	136	62	
3" 80	11-1/2	12	7-7/8	20	15-3/4	18-3/8	1-1/2	136	62	
FLANGED END										
1" 25	6-7/8	7-1/8	4-15/16	4-1/16	10	8-7/16	8-11/16	1/2	33	15
1-1/4" 32	9-3/8	9-3/8	6-3/4	4-1/4	10	7-3/16	13-7/8	1-1/4	60	27.3
1-1/2" 40	9-3/8	9-3/8	6-3/4	4-1/4	10	7-3/16	13-7/8	1-1/4	60	27.3
2" 50	10-5/8	10-5/8	8-3/16	7-1/8	20	12-1/2	14-1/2	1-1/4	100	45.5
2-1/2" 65	13-1/2	14-1/4	12	8-1/16	20	17-21/32	18-3/8	1-1/2	160	72.7
3" 80	13-1/2	14-1/4	12	8-1/16	20	17-21/32	18-3/8	1-1/2	160	72.7
4" 100	16	16-1/2*	15-3/4	15-1/2	10+	23-3/8	22-3/4	1-1/2	320	145.5
5" 125	22	22-7/8*	17	17-1/4	10+	25-1/4	24-1/4	1-1/2	610	277.2
6" 150	22	22-7/8*	17	17-1/4	10+	25-1/4	24-1/4	1-1/2	610	277.2

